



TOURISM
GUIDE



JELGAVA



JELGAVA County





JELGAVA (MITAU)

Jelgava, Katoļu Street, beginning of 20th century.

Did you know?

- Jelgava is Latvia's fourth largest city with a history of more than 755 years and the centre of education, culture, and economy of the Zemgale region. Jelgava's old name is Mitau, which was used until 1940, when Jelgava was officially used as the name of the city in the documents.
- The city dates back to 1265, when the Livonian Order's Grand Master Konrad von Mandern built a castle on an island between the Lielupe and the Driksa Rivers. Jelgava was granted its city rights and coat of arms in 1573, and its symbol – a moose – has been preserved in the coat of arms until the present day.
- Jelgava flourished during the time of the Duchy of Courland and Semigallia (1561-1795) and was later the capital of the Courland Governorate. The leaders of independent Latvia, Lithuania, and Poland have studied here. During the Second World War, most of the city's historic buildings were destroyed, and in the post-war years, architecture appropriate to the time emerged, but today the city's architecture encompasses both the ancient and the modern.
- Jelgava is a city of students and festivals. Jelgava Palace is home to the Latvia University of Life Sciences and Technologies, where more than 1,000 students start their studies each year, while annual traditions are continued in festivals and celebrations, including the creation and exhibition of ice and sand sculptures, the Milk, Bread and Honey Festival and the unique milk parcel boat regatta.

Facts

- Population: 60 564
- It is the fourth largest city in Latvia by the population
- Territory: 60,3 km²
- Jelgava was founded in 1265
- In 1573 Jelgava acquired the rights of a city and a coat of arms
- State city status acquired on July 1st 2021
- Capital of the Duchy of Courland and Semigallia from 1578 to 1795



Listen to 25 stories about the city of Jelgava and its sights in the Audio Guide section of www.visit.jelgava.lv.



Explore the city with mobile app Tours Across Baltics, where audio stories and information about city's tourism objects are available <https://toursacrossbaltics.qrd.by/jelgava>



View of J. Čakstes Boulevard and Mītava Bridge



1 JELGAVA HOLY TRINITY CHURCH — TOWER

- The Holy Trinity Church was built in 1574 and is the first newly built Lutheran church in Europe; destroyed during World War II, but its bell tower still remains;
- In 2010 the bell tower was restored and has become the most popular tourist attraction in Jelgava with an interactive multi-media expositions;
- A sightseeing platform at the height of 37 metres, an exhibition hall, a restaurant, a conference room and the tourism information centre;
- Guided tours are offered, along with creative workshops.

Akadēmijas iela 1, +371 63005445, 25619266, www.visit.jelgava.lv

2 JELGAVA HISTORY AND ART MUSEUM — OF ĢEDERTS ELIASS

- The building that houses the museum was constructed in 1775 as Academia Petrina – the first higher education institution in the territory of Latvia founded by the last Duke of Courland and Semigallia – Peter von Biron;
- Since 1952 the building houses the Museum of Jelgava City that carries the name of the great Latvian painter Ģederts Eliass (1887-1975);
- Interactive history exhibitions, Ģ. Eliass paintings, art and historical exhibitions, educational programmes for various age groups;
- Offers an opportunity to climb the tower and enjoy panorama view of the surroundings from a balcony.

Akadēmijas iela 10, +371 63023383, www.jvmm.lv

JELGAVA

○ Exploration and Discoveries



3 WOODEN HOUSE AT VECPILSĒTAS — STREET 14

- An architectural monument of national significance, dated at the end of the 18th century. One of the oldest and most valuable wooden residential houses in Jelgava, which has survived to the present day;
- Here you can see renovated rooms, elements of ancient construction and unique restoration of wooden details.

Vecpilsētas iela 14, +371 63005407, 25746417

4 JELGAVA PALACE

- The largest Baroque style palace in the Baltic states; built in 1738 based on the project by the famous Russian court architect F.B.Rastrelli, today it houses Latvia University of Life Sciences and Technologies;
- A museum is situated in the palace; guided tours are offered around the palace;
- It offers entertaining and educational programmes: Hot Chocolate in the Duke's Residence and Dorothea's Love Letter Workshop.

*Lielā iela 2, +371 63005617,
www.jelgavaspils.lv*

5 VAULT OF THE DUKES OF — COURLAND

- The largest burial place of its kind in Latvia, one of the few burial places of dynasties of rulers available for viewing in the world;
- 24 members of the Kettler dynasty and six representatives of the Biron dynasty have been buried here from 1569 to 1791 – including the dukes and their family members.

*Lielā iela 2 (Jelgava Palace building,
entrance from the Palace Park),
+371 63962197, 26499151 (open to visitors
from 1 June to 31 August),
www.rundale.net/kapenes*

6 MEMORIAL MUSEUM — OF ĀDOLFS ALUNĀNS

- The memorial house of Ādolfs Alunāns, the father of Latvian theatre, in which he spent the last two years of his life from 1910 to 1912;
- Casual ambience of the beginning of the 20th century, exhibition Jelgava and Alunāns with interactive elements, art exhibitions;
- A possibility to try on the costumes and the role of an actor on the small stage reading anecdotes and learning old Latvian words.

Filozofu iela 3, +371 63021180, www.alunans.lv

7 JELGAVA EXHIBITION OF LATVIAN RAILWAY HISTORY MUSEUM

- Exhibition about the Jelgava railway hub –one of the oldest and most important railway hubs in Latvia, about the narrow-gauge railway –“Mazā metāla sirds” (the Little Heart of Metal);
- Excursions to the former locomotive depot in Jelgava, a birthday party in the museum, workshops, cartoons and games about the safety on railway for schoolchildren are offered;
- The outside exhibition includes two handcars, locomotive wheels, a signalman post, hydro columns, traffic lights and semaphore.

Stacijas iela 3, +371 20034850, www.railwaymuseum.lv

8 SOVIET UNION CAR COLLECTION ANRU MOTORS *

- A private collection of more than 20 cars from the Soviet period such as – VAZ, GAZ, ZAZ, RAF, Moskvitch and other;
- The exhibition can be viewed 24 hours a day through the glass windows free of charge.

Garozas iela 15a, +371 29553492,
www.anrumotors.lv

* guided excursions must be booked
5 days in advance

9 CANDY WORKSHOP KARAMEĻU DARBŅĪCA

- The sweetest, most colorful place in Jelgava, most popular among the children;
- Candy making show, the possibility to make one's own candy, a shop, where visitors can buy candies.

Rūpniecības iela 1a, +371 29851426,
25664748, www.karameludarbница.lv

10 BREWERY VIEDI

- Brewery tour and tasting, product shop.

Cukura iela 21, +371 20777767,
www.viedalus.lv

11 ST. ANNA'S LUTHERAN CHURCH IN JELGAVA

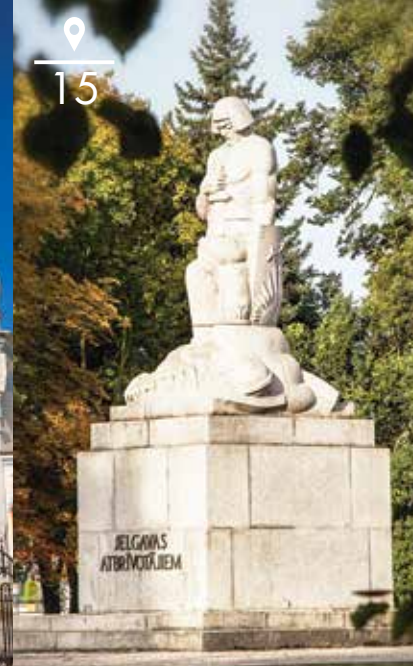
- The masonry church building was erected in the first half of the 17th century, it is the oldest church in Jelgava still standing today;
- The church is a venue for concerts of spiritual and classical music and boasts the largest organ in Zemgale region.

Lielā iela 22a, +371 29123969,
www.jelgavasannasbaznica.lv

12 CATHOLIC CATHEDRAL OF THE IMMACULATE VIRGIN MARY IN JELGAVA

- The cathedral was designed by the architect K.E.Strandmanis and built in 1906 in pseudo-Gothic style; it is splendidly decorated, with a bas-relief The Last Supper above the entrance;
- The inside of the church burned during World War II; restoration was completed only in 1992;
- In 2019, within project co-financed by the European Regional Development Fund, in the tower were installed restored crosses of four flower castings.

Katoļu iela 11, +371 63029702,
www.jelgavaskatedrale.lv



13 ST. SIMEON'S AND ST. ANNA'S ORTHODOX CATHEDRAL

- The church was built based on the design by the architect N.Chagin from 1890 to 1892 partially using the foundation and the altar of an older church designed by F.B.Rastrelli and built in 1774;
- Its interior is characteristic of orthodox churches and very splendid, it has 9 bells in the bell-tower, the biggest bell weighs 830 kg;
- In 2019, within project co-financed by the European Regional Development Fund, wall and ceiling paintings were restored.

Raiņa iela 5, +371 63020207

15 MONUMENT TO THE LIBERATORS OF JELGAVA LĀČPLĒSIS

- The monument serves as a memorial to liberation of Jelgava from the Bermont's army in 1919. In 1992 the sculptor Andrejs Jansons restored the monument Lāčplēsis (Bear-slayer) and the Dark Knight created by his father Kārlis Jansons in 1932.

Station Park

14 MONUMENT TO JĀNIS ČAKSTE, THE FIRST PRESIDENT OF LATVIA

- A monument to the president of Latvia Jānis Čakste (1859-1927), who was born near Jelgava, went to school and worked in Jelgava.

Akadēmijas iela 1
(near the Holy Trinity Church Tower)

16 MEMORIAL SIGN IN HONOUR OF THE SINGER NORA BUMBIERE

- The sculptor Kārlis Īle created the sculpture commemorating the popular singer of the 1970s Nora Bumbiere, who was a local of Jelgava.

The square behind the Jelgava
Culture House



JELGAVA

Relaxing Moods

17

- The Palace Island's floodland meadows (the island is located at the junction of the rivers Lielupe and Driksa) have a substantial diversity of bird and plant species, and approximately 70 wild horses have found a home there;

- Since summer 2018 visitors can climb a 19,2 metres high wooden observation tower to watch the wild horses, birds and the panoramic view of the Lielupe floodland meadows.

It is advisable to visit the floodland meadows for the first time on a guided tour to learn about the wildlife and the wild horses living in the meadows, phone +371 20264343

** The largest part of the island behind the watchtower is closed from 1 April to 30 June to protect the birds during their nesting season.*

- Wooden boardwalks have been built in the territory between Sniega Street, Vītolu Road, Būriņu Road, and Miežites Road, revealing another corner of the city's nature – flood-land meadows of the Svēte River. The total length of boardwalks is approximately 1.6 kilometres.

- Forest territory with a network of paths, the length of which totals several kilometres, for walking, running, Nordic walking or a picnic. There are wooden footbridges in addition to the paths and sculptures of elks made of wood and metal at the entrance. The forest can be accessed from Rubeni road, where the main entrance to the forest territory is located.

- One of the longest footbridges in Latvia, connects the centre of the city and the Pasta Island. This is an excellent place for leisure or active recreation: playgrounds for children, outdoor training equipment, a beach, volleyball courts, a stage, an ice rink. The largest festivals of the city take place on the island, a park of grog sculptures.

17

**LIELUPE
FLOODLAND
MEADOWS,
WILD HORSES
AND
OBSERVATION
TOWER***

18

**WOODEN BOARD-
WALKS AT THE
FLOOD-LAND
MEADOWS OF
THE RIVER SVĒTE**

19

**LANGERVALDE
FOREST**

20

**PASTA (POST)
ISLAND AND
BRIDGE MĪTAVA**

- Jelgava is a student city therefore sculptor Kārlis Īle has created an image of a student roaming Jelgava, who he has named Jēkabs Ceriņš. The handle of the umbrella has special powers – one must think of a wish and touch the handle then the wish will come true!

- J.Čakstes Boulevard has two levels – one level is parallel to the street, the other – follows the bank of the Driksa River with 3 metres high illuminated waterfalls. The promenade on the right bank of the Lielupe offers a great view upon the city, it also has a swimming area, playgrounds for children and stand up paddle board (SUP) rental. At the end of the promenade – the sculpture “Sirdsputns” crafted of metal by the sculptor Kārlis Īle.

- The Environmental Object Time Wheel 100 created by the sculptor Kārlis Īle is a dedication to the centenary of the Latvian State, unveiled on 4 May 2018. It is adjacent to Vecpilsēta (Old Town) Street Quarter – the oldest buildings in Jelgava that have survived World War II.

- In 1818 the residence of the Counts von Medem was built here – Villa Medem. The house was surrounded by a garden, which later became Uzvara Park.

- There is a memorial stone “Dziesmu vainags” (The Crown of Songs) (author Ģirts Burvis) in the park that commemorates IV All-Latvian Song and Music Festival that took place in Jelgava in 1895 ;

- A children's leisure and play area is available from 2021.

21

**SCULPTURE-FOUNTAIN
OF JELGAVA'S STUDENT**

22

JELGAVA PROMENADE

23

**THE ENVIRONMENTAL
OBJECT LAIKA RATS 100
(TIME WHEEL 100)**

24

UZVARAS PARK



21



JELGAVA

Great Adventures



25 BOAT TOURS ON THE LIELUPE AND DRIKSA RIVERS

- The boat leaves from a pier on J.Čakstes Boulevard promenade near Mītava Bridge (number of places 7 – 40 persons).

i Additional information at Jelgava Tourism Centre
+371 63005447, +371 25619266, www.visit.jelgava.lv

RENTAL OF PEDAL BOATS, BOATS AND SUP BOARDS

- 26** Paddle Boat rental Pelikāns.
Pasta sala 1, +371 26434520
- 27** Pasta (Post) island SUP board rent.
Pasta sala 1, +371 26434520
- 28** Stand up Paddle Board (SUP) Rental SUPX.
Lielupe promenade beach, Peldu iela, +371 2575755, www.supx.lv
- 29** Paddle Boat and Boat Rental on the Pasta (Post) Island
Pasta sala 3, +371 25432323, +371 28379193
- 30** Jelgava Yacht Club.
Pilssalas iela 6, +371 20205215, +371 29242520, www.jjk.lv
- 31** Boat rental Mučas
+371 20205127, +371 28330963, <http://www.laivunoma.com/>

BEACHES IN JELGAVA

There are two swimming areas on the Lielupe:

- 32** On the right bank of the Lielupe by the pedestrian promenade;
- 33** On the left bank of the Lielupe, on the Post Island.



34 ZEMGALE OLYMPIC CENTRE

- A multifunctional sports hall, a football and athletics stadium, volleyball courts, a BMX track;
- On 22nd of June 2020 stadium acquired the name of outstanding Latvian javelin thrower Jānis Lūsis that was born on Jelgava.

Kronvalda iela 24, +371 20365713, 26356449, www.zoc.lv

35 RECREATION AND SPORTS CENTRE ZEMGALE

- Bowling, tennis courts, +371 63007700
- Indoor ice arena, +371 63007220

Rīgas iela 11,
www.skzemgale.lv

36 SPORTS AND RECREATION COMPLEX RULLĪTIS

- A go-kart racing track, paintball.

Aku ceļš 1, +371 28285633,
www.rullitis.lv

37 LASERTAG PARK LASERDOG

- Indoor lasertag park.

Aviācijas iela 8D, (3th floor),
+371 20000089, www.laserdog.lv

38 SIA SĀLS ISTABIŅA

- Salt therapy, oxygen cocktails.

Raiņa iela 40,
+371 26310831, salsistabina.mozello.lv/

39 CHILDREN AND YOUTH CAMP LEDIŅI

- A place for activities and recreation surrounded by a pine forest – outdoor training equipment, forest agility tracks, a slide, a swing set, a beach volleyball court, a picnic place.

Lediņu ceļš 1, „Lediņi”, +371 26448086,
www.junda.lv

CHILDREN AMUSEMENT CENTRES:

- 40** Bossiks, Pulkveža Brieža iela 4,
+371 63022438, 29416619, www.bossiks.lv

- 41** Bambino, Peldu iela 4, +371 29948109,
www.bambinoatrakcijas.lv

- 42** Bumbu virpulis, Dobeles iela 48
(2nd floor), +371 29102766

- 43** Happy house, Krišjāņa Barona iela 40,
+371 29992199

44 ICE ARENA ON THE PASTA ISLAND

- The public ice arena of Jelgava city with a roof; in summer the arena is adapted for roller skating and other sports.

Pasta Island, +371 20367677





JELGAVA COUNTY

Did you know?

- The richness of Jelgava Municipality lies in the significant events of the past, as evidenced by the large number of manor houses inviting to explore their rich history, stories, and legends, while enjoying the natural beauty of the manor parks coloured by the different seasons. Jelgava Municipality is also home to a number of important personalities – the first President of Latvia Jānis Čakste, writer Edvarts Virza, painter Ģederts Eliass, and many others, whose life and work we can be proud of and tell everyone about. The historical events and the heroism of the soldiers in the Christmas battles, which can be explored and felt in the surroundings of Ložmetējkalns (Machine Gun Hill), do not leave anyone indifferent.
- Jelgava Municipality has long been known as a breadbasket, so visiting enterprising artisan producers and their farms, along with learning about the past, can be a pleasant respite and taste experience.
- Jelgava Municipality is crossed by the Lielupe River with its many tributaries. Rare species of plants, birds, and animals can be found in river creeks and meadows, providing evidence of a clean environment.
- Just choose your preferred route and way to spend your time, and a wonderful world will open up to you. Enjoy with family, friends, or colleagues!
- Come and get to know Jelgava Municipality in all its diversity!

Facts

- Population: 34 000
- Territory – 1600 km²
- Jelgava county includes 16 parishes – Cena, Eleja, Glūda, Jaunsvirlauka, Kalnciems, Lielplatone, Līvberze, Ozolnieki, Platone, Salgale, Sesava, Svēte, Valgunde, Vilce, Vircava and Zaļenieki parishes.



WITNESSES OF HISTORY



45 CHRISTMAS BATTLE MUSEUM MANGAĻI

- An exhibition about the legendary Christmas Battles of World War I;
- A part of the German defence line – the German Rampart, from the times of the war has been reconstructed in the territory of the museum in its authentic location; it is unique for the Baltic region;
- An exploratory trail of 7.2 km has been created following the route of the attack of the 1st Latvian Riflemen Brigade on January 5, 1917.

Valgunde parish, „Mangaļi”,
+371 28349259, 67228147,
www.karamuzejs.lv
(GPS 56.8232005; 23.7034132)



46 LOŽMETĒJKALNS (MACHINE-GUN HILL) IN TĪREĻPURVS

- A symbol and a memorial to heroism of Latvian Riflemen, a unique witness to the battles fought during World War I;
- A 27 metres high wooden watchtower has been built, offering visitors beautiful panoramic views at forests surrounding Tīreļpurvs.

Valgunde parish
(GPS 56.8664999; 23.6606057)



47 THE HOUSE OF THE FIRST PRESIDENT OF LATVIA JĀNIS ČAKSTE

- Auči house was built in 1930s; since 1995 the property once again belongs to Čakste family;
- A new exhibition was opened in 2018 in the renovated servants house, which tells about the fate of the first president of the Republic of Latvia Jānis Čakste and his family using modern, contemporary media.

Salgale parish, „Auči”, +371 26392154
(GPS 56.5946764; 23.9575775)



48 THE HOUSE OF LITERATES EDVARTS VIRZA AND ELZA STĒRSTE BILLĪTES

- Latvian literary figures Edvarts Virza and Elza Stērste lived in Billītes for many years;
- The house is maintained by heirs to the family, an exhibition about the lives of the authors and their creative activities is available.

Salgale parish, +371 29299790
(GPS 56.5750280; 24.1092300)



49 TETELE (TETELMINDE) TOWER AND PARK

- The tower was built in the second half of the 19th century as a watchtower for hunters in the park of Tetelminde Manor, on the bank of the Lielupe.

Cena parish, Tetele (GPS 56.6370692; 23.8392445)

51 MONUMENT TO THE FALLEN SOLDIERS OF RIGA 6TH INFANTRY REGIMEN

- Dedicated to 16 fallen soldiers of Riga 6th Infantry Regiment in the battle against the Bermontians;
- Unveiled in 1937, restored in 2009.

Cena parish, Skuju Elementary School (GPS 56.7261722; 23.8501107)

50 VAREĻI MONUMENT

- The monument is dedicated to 14 cadets of the Latvian Military School killed in the fights against Bermont's army in November 1919;
- Designed by the artist J.Borkovskis, first unveiled in 1935; blown up in 1951, restored in 1990.

Salgale parish (GPS 56.6240561; 23.9091423)

52 MEMORIAL SITE BRĪVĪBAS GAISMA (THE LIGHT OF FREEDOM)

- In 2018 SIA UPPE created an environmental object – a memorial site to those, who stood watch on the barricades in 1991.

Cena parish, Brankas (GPS 56.6852286; 23.8345774)

54 ZAĻENIEKI (THE GREEN) MANOR AND PARK

- The hunting residence of the Duke of Courland and Semigallia, an example of the 18th century architecture, a considerable amount of original architectural elements have been preserved in the building;
- Currently Zaļenieki Manor is home to Zaļenieki Commercial and Crafts School;
- The House of Restorers was built in 2019;
- The park is populated by exotic tree species, a nature trail has been created.

Zaļenieki parish, +371, 22043531, (GPS 56.5308990; 23.5082256)

55 VILCE MANOR AND PARK

- The manor was built in the 1750s, for the families of Barons von Medem and Hahn;
- Presently the manor house houses Vilce Primary School, parish administration, tourist information point, an exhibition about the history of the manor and the parish, a disc golf course has been created in the park;
- The manor and its vicinity are a part of the Nature Park Vilce.

Vilce parish, +371 26351169, 28346682 (GPS 56.4206676; 23.5423063)

56 LIELPLATONE MANOR AND PARK

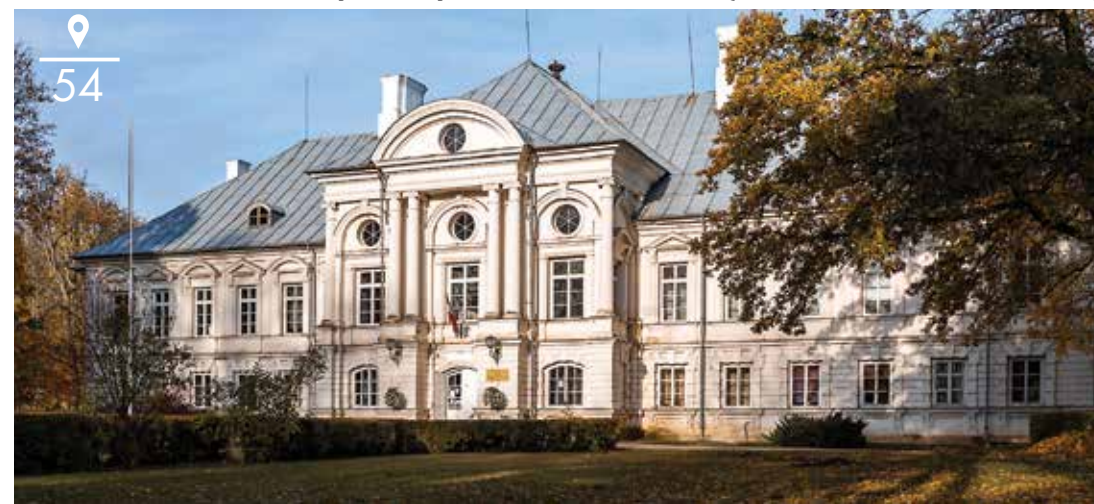
- The manor, about which many legends are told, was established in the 19th century and was owned by Barons von Hahn;
- Here is located the bell collection that is considered to be the largest in the Baltics. It contains around 1000 bells of different origin, history, age, shape and materials;
- In 2018 the laundry building of the manor was restored as an authentic laundry building of the 18th/19th century with an exploratory programme of the laundry traditions;
- Presently the manor house is Lielplatone parish administration and the tourist information point.

Lielplatone parish, +371 26611468 (GPS 56.4521918; 23.6594295)

53 ELEJA MANOR PARK AND TEA HOUSE

- The palace at Eleja Manor was an outstanding example of the Classicism style architecture in Europe; ordered by the Duke Christoph Johann Friedrich von Medem and built from 1806 to 1810, destroyed during World War I;
- The romantic Tea House and the stone fence with arcades has been reconstructed in our days;
- Rare tree species have been preserved in the park, it has 15 noble trees; the open-air stage there hosts the biggest festivals and events in Jelgava county;
- Restored historical paths, a bridge and two interactive objects made by the sculptor Ģebs Panteļejevs - the sculpture Mīlestība (Love) and the environmental object Saruna (Conversation).

Eleja parish, +371 26128853, (GPS 56.4253852; 23.6998833)



57 LIELVIRCAVA MANOR

- The manor house was built from 1803 to 1808 at the location of the old castle, the manor was built by Baron von Kloppmann, later von Hahn family became its owners;
- From 1924 to 1980 a school was located in the manor house;
- Tours through the manor house, fashion history stories, and a collection of replicated 19th-century costumes. Textile courses for schoolchildren.

Platone parish, Lielvirca, +371 22024127, 28758947 (GPS 56.5214679; 23.7570932)

58 VIRCAVA MANOR AND PARK

- The manor complex was built in the 18th century based on a design by S.Jensen, it was a favoured country residence of the Duke of Courland Peter von Biron;
- In 1919 the Bermontians burned the manor down during their withdrawal from Jelgava;
- The Chevaliers' House, where Virca Secondary School is located, has been preserved best to our days, the former granary is now home to the People's House, the Baroque style park has been partially preserved.

Virca parish, +371 29916889 (GPS 56.5591648; 23.7749299)



59 STAĻĢENE MANOR

- The manor complex was built at the end of the 18th century; with a Classicism style manor house designed by the architect S.Jensen;
- Since the 1930s the manor house has been adapted as a school building;
- Jaunsvirlauka Parish Local History Museum is located in the cellar of the manor house, the former Servants House houses Jaunsvirlauka Parish Culture Centre Līdumi;
- An environmental object – Latvian seasonal circle – has been created in the manor park.

Jaunsvirlauka parish, Staļģene, +371 26383129, 29199324 (GPS 56.5718193; 23.9614250)



60 BERĶENE MANOR

- Berķene Manor is one of the oldest small manors in Zemgale and is located in a picturesque place – on the bank of the Svēte River, between Tērvete and Eleja;
- Harmonious recreation: accommodation in the manor house and relaxation in the SPA complex.

Vilce parish, Ziedkalne, +371 29252565, 29228580, www.berkenesmuiza.lv (GPS 56.4289028; 23.4800706)

61 ABGUNSTE MANOR

- The manor was built around 1780, at the beginning of the 20th century it housed the parish school, later apartments, a shop;
- Open working spaces have been created in the manor house for ceramists, textile artists and woodworkers, the biggest ceramics kiln in Latvia is operated here;
- It offers an inspiring environment for the creative processes of art and culture and organisation of events, accommodation.

Zaļenieki parish, Abgunste, +371 29393131, 28373711, www.abgunste.lv (GPS 56.4781923; 23.4885369)

62 BLANKENFELDE MANOR AND PARK

- The manor's buildings acquired their present exterior in the 19th century, the manor is rich in small architectural details rare in Latvia – the entrance gate, small pavilions;
- At the beginning of the 19th century the future King of France Louis XVIII stayed at the manor twice;
- A tour of the manor complex is available, as well as an event space, accommodation, a restored park. The pride of the manor – elderberries, from which a variety of products are made and tastings are offered.

Vilce parish, Blankenfelde, +371 26490272 (GPS 56.3446532; 23.5463140)



SACRED HERITAGE

63 THE BRANCH OF THE RIGA HOLY TRINITY SERGIY WOMEN'S MONASTERY

- The monastery was built in the end of 19th century and is active also nowadays. Presently approximately 50 nuns live in the monastery. Here you can see Jesus Christ's Transfiguration Orthodox Church, Jānis Trepnieks Orthodox church and the chapel.

Valgunde parish, +371 63085215, +371 63085244 (GPS 56.7336959; 23.6932123)

64 LIELVIRCAVA LUTHERAN CHURCH

- The oldest stone church building in Jelgava county, built in 1595 on the funds of the owners of Lielvircava Manor Barons von Klopmann.

Platone parish, Lielvircava, +371 26547117, 29723404 (GPS 56.5100481; 23.7556837)

65 ZAĻENIEKI LUTHERAN CHURCH

- The current building of the church was erected in 1872. The church has an organ built in 1862, the bell in the church tower is the largest in Jelgava county.

Zaļenieki parish, +371 26137247, 26747240 (GPS 56.5298682; 23.4963801)

66 LĪVBĒRZE CATHOLIC CHURCH

- The only wooden church in Jelgava county, built in 1684. The interior of the church contains artistic heritage of national value from the 17th and 18th centuries.

Līv bērze parish., +371 26466355 (GPS 56.7038921; 23.4545922)

67 STAĻĢENE ST. VIRGIN MARY CHURCH (THE AMBER CHAPEL)

- The church was built in 1998 on donations from Germany and is open to the faithful of any Christian denomination.

Jaunsvirlauka parish, Šauvas, +371 29199324 (GPS 56.5449864; 23.9237160)



JELGAVA COUNTY

○ Flavours and Sensations

9
71

In order to enjoy the hospitality and delicious products of the owners of Jelgava county, the visit must be booked in advance.

68 MĀLKALNI FAMILY FARM BLŪDŽI

- Tastings of unripened cheese, bread, vegetable salads and preserves made at the farm.

Sesava parish, Bērvircava, +371 27114820, 24818456 (GPS 56.3966397; 23.7346401)

69 PEPPERMINT PRODUCT DEGUSTATION PIPARMĒTRU NAMIŅŠ

- Enjoying peppermint tea made of various cultivars of the plant along with other products made from peppermint, creative workshops are also offered.

Vilces parish, „Terēni, +371 26394062, 26199825, www.piparmetras.lv (GPS 56.4248301; 23.5073094)

70 BEEKEEPING FARM LĪGAS MEDUS

- A visit to the apiary with a bee-keeper to learn about the life of bees and the process of honey production, as well as a tasting of the farm's products.

Virca parish, „Mucenieki”, +371 29110940, 26189710, www.ligasmedus.lv (GPS 56.5959411; 23.7989473)

71 SHIITAKE MUSHROOM FARM TRUBENIEKI

- The farm is one of the largest shiitake mushroom growers in Latvia. A tour around the farm with stories about mushroom growing secrets, tastings of shiitake soup, bread and fresh shiitake mushrooms.

Lielplatone parish, +371 26135555, (GPS 56.4664074; 23.6120894)



72

72 SEA BUCKTHORN GARDEN ZELT

- Thematic excursions in the garden, sea buckhorn product tastings, gastronomic master classes, lectures and seminars. Quiet and spacious territory for festivities, concerts and other events

Platone parish, „Zeltlejas”, +371 28804504, www.zelt.bio (GPS 56.6074954; 23.7228550)

73 PRODUCTION OF ROASTED BEANS PUPUCHI

- The factory produces a crunchy and healthy snack from broad beans – Pupuchi. Visitors may learn about the value of the product and the production process, participate in some practical activities and taste the product.

Jaunsvirlauka parish, Dzirnietki, Ievu iela 12, +371 26171549, www.pupuchi.lv (GPS 56.5649340; 23.8752463)

74 DISTILLERY TĪREĻU DZĪTUVE

- A producer of spirit drinks offering excursions to beverage plant, tastings of alcoholic beverages made of fruits and berries grown in Latvia. Possibility to visit the farm and horse stable.

Valgunde parish, Tīreļi, „Šinšilas”, +371 29461166 (GPS 56.834515; 23.5959223)

75 OSTRICH FARM MAZZARIŅI

- The ostrich farm has over 50 ostriches from Australia, Africa and South America. Alpacas and rabbits are also kept at the farm and visitors can see them too.

Glūda parish, Nākotne, +371 27178050, www.ratites.lv (GPS 56.6369874; 23.4656221)

76 PINE CONE TASTING MĪTAVAS ČIEKURS

- Here are produced various products from Latvian pines for immunity and respiratory health;
- Excursions and stories about pine product production process, tastings and cone jam making master class.

Svētes parish, Atpūta, Bērzu iela 2, +371 28469842, <http://www.mitavasciekurs.lv> (GPS 56.612987 23.678327)

77 CONFECTIONERY ABRA

- Latvian company producing natural candies from plants and vegetables, health and energy cookies, as well as various plant powders;
- Excursion to confectionery, tastings, master classes

Meliorācijas iela 2, Ozolnieki, +371 29412852, 29358736 (GPS 56.688998 23.791076)

78 A PLACE OF ADVENTURE AND INSPIRATION NĀKOTNES PARKS

- An area of more than 50 hectares. The place where the famous Soviet-era collective farm Nākotne stood in the last century;
- Vintage items, a retro motorcycle collection, where almost all the Sarkanā zvaigzne Red Star mopeds are displayed;
- Cereal flakes Milzu! and tasting of organic products of the juice Dabas Dots;
- 7.4 ha wide landscaped apple orchard, suitable for walks, various private events. Accommodation available.

„Industriālais parks”, Glūda parish, +371 29242777, +371 25713949 (GPS 56.60744107986423 23.457017612524837)

79 NATURAL COSMETICS MASTER CLASSES DĀRZIŅI-2

- In farm Dārziņi-2, seedlings, herbs, medicinal plants, and flowers are grown in an open field. Natural cosmetics are made from the plants grown on site.

Platone parish, „Dārziņi”, +371 26445730 (GPS 56.6124201 23.728691)



78



80 GARLIC WORLD

- Excursion to Garlic World, stories about garlic product production, tastings of unusual garlic products- garlic tea, pickled garlic flowers, garlic salsa and others.

Priežu 8, Dalbe, Cena parish, +371 29206015, www.kiplokupasaule.lv
(GPS 56.7692886 23.8692540)

81 AMBER PRODUCTION LIVONIJAS DZINTARS

- A handicraft company producing cosmetics, ointments, and jewellery from Baltic amber.
- When visiting the company, one can get acquainted with the process of manufacturing amber cosmetics, attend lectures to understand the healing properties of amber, and discover the diverse world of crystals and minerals.

Kalnciems, Lielupes iela 75, +371 29436594 (GPS 56.807259 23.589832)

82 WOODWORKING WORKSHOP AMATNIEKI

- The woodworking process from a spoon to a house, an opportunity to watch and participate in the crate weaving process.

Sesava parish, +371 26892959, www.kocinieks.lv
(GPS 56.4187202; 23.7764773)

83 ARBORETUM VILKI

- The arboretum is populated by over 1000 various plants – some characteristic of the Latvian countryside, some – exotic. You can also take a look at the Latvian blue cows and taste their milk or treats made out of it.

Zaļenieki parish, +371 26153697, 28378543
(GPS 56.5320864; 23.5525359)

84 FROG FIGURINE COLLECTION VARŽU MĀJA

- Private collection of souvenirs, which displays more than 2000 figurines of frogs from different parts of the world.

Eleja parish, „Indrāni”,
+371 28609853
(GPS 56.4803012; 23.7141506)

86 TREE NURSERY BĒTRAS

- Growing of fruit trees and berry bushes, farm tours, purchase of seedlings, tasting of candied quince and cranberry, and syrups thereof.

Salgale parish., +371 26388251,
www.betras.lv
(GPS 56.6377002; 23.9501895)

85 GOAT FARM LĪCĪŠI

- One of the biggest goat farms and manufacturers of goat milk-based products in Latvia, tastings of goat milk products.

Cena parish, +371 29322860, www.licisi.lv
(GPS 56.7120470; 23.8179420)

87 MINI ZOO LAUKU SĒTA

- The territory of Zoo Lauku sēta is the right place to enjoy peaceful walks, watch animals living and grazing in the meadows – ponies, donkeys, a lama, dwarf goats, dwarf sheep, dwarf pigs and various birds.

Cena parish, Brankas, „Jaunaudzes”,
+371 27171712, www.zoolaukuseta.lv
(GPS 56.6893676; 23.8364277)





JELGAVA COUNTY

Active Recreation

88

88 NATURE PARK VILCE

- A nature park with a hilly terrain uncharacteristic of Zemgale, with the exploratory Barons trail, which includes the Spring of Lielmāte, a Semigallian hillfort with a sight-seeing platform, the steep banks of the rivers Rukūze and Vilce with sandstone cliff exposures;
- A rest area is maintained in the Zaķi Meadow;
- Exploratory guided excursions in the park must be booked prior to the visit.

Vilce parish, +371 26351169 (GPS 56.4205219; 23.5418293)

89 RECREATION AREA GARIE KALNI - BŪRIŅU MEŽS

- A well-equipped picnic area is available.

Glūda parish, (GPS 56.627006 23.652481)

HORSE RIDING

90 Mītavas zirgi,
Virca parish, „Daunāti”, +371 28611961,
(GPS 56.5945109; 23.7550350)

91 Tīreļu stalli,
Valgunde parish, Tīreļi, „Šinšilas”,
+371 26544243,
(GPS 56.834515; 23.5959223)

92 Mazmušķu zirgi
Cena parish, „Mazmušķi”, +371 29140535,
29552446 (GPS 56.7064444; 23.7928824)



90

- A sturgeon hatchery, and a possibility to catch some fish;
- A wast complex for active recreation – a football field, volleyball courts, a possibility to play badminton, take a ride on a rowboat or a pedal boat, rent a SUP board;
- Picnic areas with tables and fireplaces, as well as a children's playground are available;
- Visitors can stay overnight in cabins or at the hotel, and enjoy a meal in the café.

Svēte parish, „Grantiņi 1”, +371 28602267,
www.grantinicamp.lv (GPS 56.5519957; 23.6516817)

93 RECREATION COMPLEX GRANTIŅI

- The right place for organizing outdoor events, a picnic, for recreation, entertainment and outdoor sports activities;
- There is a playground for children, a stage, streetball and beach volleyball courts in the territory.

Svēte parish, +371 28660603
(GPS 56.5871806; 23.6597691)

94 PLACE FOR ACTIVE LEISURE AND SPORTS LĪGOTNES

- An open-air playground for children: swings, carousels, mini-golf, mini train, a pedal-copter, a slide, a Ferris wheel for children, agility hurdles, etc;
- Tasty meals in the nearby restaurant Zemnieka cienasts and a hotel is also available for accommodation.

Jaunsvirlauka parish, „Līči”, +371 63058443, 29204514,
www.lici.lv (GPS 56.6400500; 23.7777893)

95 RECREATION AND ENTERTAINMENT COMPLEX VIESU LĪČI



95

96 BOAT RENTAL AND TOURS OZOLAIVAS.LV

- Rental of canoe boats, boating routes, organised boat trips and expeditions on rivers in Zemgale.

Kļavu iela 6, +371 23202900, www.ozolaivas.lv
(GPS 56.6931602; 23.7530069)

97 OZOLNIEKI SPORTS SCHOOL

- A sports school, sports hall, a gym with exercise equipment, a football field, 3 streetball courts, a skateboard park, inventory rental, sauna.

Stadiona iela 5, +371 26520497
(GPS 56.6909228; 23.7892283)

98 OZOLNIEKI FOREST PARK

- A public walking path and a ski track with artificial lighting in winter; an artificial hill for the lovers of active winter recreation.

Skolas iela 20
(GPS 56.6925971; 23.7854396)

99 ICE ARENA OZO HALLE

- Public skating, rental of the ice rink, rental of ice skates, figure skating training, sauna.

Stadiona iela 5b, +371 63050615,
26604863, www.ozohalle.lv
(GPS 56.6909228; 23.7892283)

100 WAKE PARK 5 MASTI

- The only circular cable wakeboarding and waterskiing track in the Baltic states, an inflatable aqua park.

Ozolnieki Lake, +371 28366699
(GPS 56.6884015; 23.7965089)

101 FISHING SUDRABLĪCIS

- Recreation by water, commercial fishing, surfing, a place for tents and boat rental.

Cena parish, „Liegas”, +371 29183711
(GPS 56.6458260; 23.8324476)

102 OZOLNIEKI LAKE

- Playgrounds for children, a beach, a path for walking and riding bicycles that circles the lake.

Ozolnieki (GPS 56.6893541; 23.7967288)

TOURISM SERVICES



ACCOMMODATION

(the number of beds is shown in brackets)

JELGAVA



Hotel Jelgava **** (80)

Lielā iela 6, +371 29222814,
www.hoteljelgava.lv

Hotel Zemgale (78)

Skautu iela 2, +371 63007707,
www.skzemgale.lv

LLU Youth Hostel No. 8

Lielā iela 19, +371 25419650

Guest House Kārklui muiža (16)

Kārklui iela 67, +371 26222266

Apartments Alauda (6)

Zemgales prospekts 9,
+371 27814539,

Central Hostel Jelgava (20)

Krišjāņa Barona iela 40A - 214 kab,
+371 20004108, www.hosteljelgava.lv

JELGAVA COUNTY



Hotel Senliči (34)

Jaunsvirlauka parish,
+371 20007065, www.senlici.lv

Recreation Complex Grantiņi (38)

Svēte parish, Grantiņi 1,
+371 28602267, www.grantinicamp.lv

Berķene Manor (10)

Vilce parish, Ziedkalne,
+371 29252565, 29228580,
www.berkenesmuiza.lv

Abgunste Manor (65)

Zaļenieki parish, +371 29393131,
28373711, www.abgunste.lv

Blankenfelde Manor (15)

Vilce parish, +371 27810348,
www.blankenfelsesmuiza.lv

Guest House Pūtelkrogs (29)

Zaļenieki parish, +371 63011900,
29255010, www.puteli.lv





Guest House Aitiņlauvas (19)
Valgunde parish, Rīga – Liepāja 22.km,
+371 29160393, www.aitinlauvas.lv

Guest House Guntmārītes(11)
Valgunde parish, +371 26164173,
29444859, www.guntmarites.lv

Guest House Upeslīči atpūtai ” (35)
Līvērze parish, +371 28117861,
www.upesliciatputai.lv

Guest House Zaļie atvari (60)
Līvērze parish., Atvari,
+371 29161683, 29488465
www.zalieatvari.lv

Guest House Kaupēna dzirnavas (42)
Zaļenieki parish, +371 29263768,
26551259

Guest House Brangūļi (15)
Valgunde parish, Valgunde,
+371 28772324, 25918171

Guest House Naktsmājiņa (9)
Jaunsvirlauka parish, +371 20455402,
29204514, www.lici.lv

Guest House Upmāļi (15)
Vilce parish, +371 29237149,
www.upmali.lv

Guest House Galzemji (80)
Jaunsvirlauka parish, +371 29188408,
www.galzemji.mozello.lv

**Dormitory of Zaļenieki Commercial
and Crafts School (100)**
Zaļenieki parish, +371 29273809,
63074250, www.zav.lv

Hostel Jaunlīdumi (42)
Jaunsvirlauka parish, Dzirnietki,
+371 29199324, www.lidumi.lv

**Conference and recreation complex-
hotel LIZARI (90)**
Lizari, Vircava parish, +371 20375375,
<https://www.lizari-conference.com/lat-home>

Guest House Alberģe(9)
Bēzū iela 7 dz. 14, Līvērze, +371 29284599

Guest House Jasmīnu nams (6)
Tušķi, Līvērze parish, +371 26431344

Guest House Laukmaļi (10)
Glūda parish, Laukmaļi, +371 26116643

Guest House Vijas (16)
Zaļenieki parish, + 371 27814539,
26495564

**A place of adventure and inspiration
Nākotnes parks (17)**
Industriālais parks, Glūda parish,
+ 371 25713949

Hostel Sili (20)
Liepu iela 8, Mežciems, Jaunsvirlauka
parish, +371 24807777

Agate Hotel (48)
Ozolnieki, Skolas iela 16,
+371 28684473, 63013527,
www.agatehotel.lv

Hotel of Ozolnieki Sports Centre (33)
Ozolnieki, Stadionā iela 5,
+371 26520497,
www.ozolnieki.lv

**Dormitory of Latvijas Lauku
konsultāciju un izglītības centrs(45)**
Ozolnieki, Rīgas iela 34,
+371 22018583, 63050220, www.llkc.lv

Holiday House Ānes muiža (16)
Cena parish, Āne, +371 26483712,
www.anesmuiža.lv

Ānes Youth Initiative Centre Hostel(21)
Cena parish, Āne, Celtnieku iela 12,
+371 25996199

Camp Place Cīzeri
Salgale parish, +371 29477317



Restaurant Panorāmas skati
Akadēmijas iela 1 (8th floor),
+371 27702202

Restaurant and Bistro Bar Park
Kr. Barona iela 3, +371 20118881,
www.restoransparks.lv

Restaurant Chocolate & Pepper
Kr. Barona iela 6, +371 63010220

Restaurant Pilsētas elpa
Pasta sala 1, +371 26633703,
29320268

Bar-restaurant Putnu dārzs
Lielā iela 6, +371 63026633,
www.hoteljelgava.lv

Lunch Restaurant Otto
Lielā iela 17, +371 26661151,
www.ottojelgava.lv

Tavern Istaba
J. Čakstes bulvāris 7, +371 63025909,
29507108

Café Pie mednieka
Vecpilsētas iela 19, +371 26385018,
63028528,

Bar Melno cepurīšu balerija
Raina iela 28, +371 27787776,
www.mcbalerija.com

Tavern Kreklu krogs
Lielā iela 19a, +371 26633433

Jelgava Palace Café Niko
Lielā iela 2, +371 26891862

Café Tavs mirklis
Pasta iela 45, +371 22775533,
22772211,
www.tavsmirkklis.mozello.lv

RESTAURANTS AND CAFÉS

Picnic basket delivery PikniKarba
+371 26336225, +371 20089525,
www.piknikarba.lv

Café Central Cafe Jelgava
Jelgava, Lielā iela 3, +371 20144454

Café - pizzeria Comedor
Akadēmijas iela 4, +371 20319837, 25294745

Pizzeria Picu darbnīca
Rīgas iela 1, +371 20003993,
www.picudarbnica.lv

Pizzeria Čili Pica
Katoļu iela 7 un Rīgas iela 11,
+371 63045555, 26195930, www.cili.lv

Fast Food Restaurant McDonald's
Brīvības bulvāris 1, +371 63020166, 26468158,
www.mcdonalds.lv

Fast Food Restaurant Hesburger
Katoļu iela 10b, +371 25911221;
Loka maģistrāle 2a, +371 26480302,
www.hesburger.lv

Tea House Silva
Pilssalas iela 2a, +371 22119119, www.bistro.lv

Pastry Studio Tarte
Mātera iela 26, +371 20136090

Coffee and Breakfast Bar Academia
Akadēmijas iela 4a, +371 23303804

Bistro Silva
Driksas iela 7/9, +371 63084899, 22009889,
www.bistro.lv

Pastry shop Putni
Jelgava, Mātera iela 40, +371 29172237

Pastry shop Mr.Zefirs
Jelgava, Lielā iela 15, +371 25180404

Bakery Prospekts Z9
Zemgales prospekts 9, tel. +371 27814539



Restaurant Pūtelkrogs
Zaļenieki parish, „Pūtelu krejotava”,
+371 63011900, 29255010,
www.puteli.lv

Restaurant Grantiņi
Svēte parish, „Grantiņi 1”,
+371 28602267,
www.grantinicamp.lv

Restaurant Aitiņlauvas
Valgunde parish, Rīga – Liepāja 22.km,
+371 29160393, www.aitinlauvas.lv

Restaurant Famille
Ozolnieki, Skolas iela 16,
+371 25661811, www.agatehotel.lv

Restaurant & Grill Bar Masti Grill&Chill
Ozolnieki, Rīgas iela 44,
+371 23884400, www.mastigrill.lv

Bar Meka
Ozolnieki, Stadiona iela 5a,
+371 63050162, 29444403, www.meka.lv



Café Zemnieka cienast
Jaunsvirlauka parish,
Rīga – Šauļi 43.km,
+371 63058443, 20455402,
www.lici.lv

Café Piramīda
Eleja parish, Eleja, Bauskas iela 3,
+371 26866206

Lunch Restaurant Centrs
Ozolnieki, Rīgas iela 34,
+371 28890202, 20031323

Kebab Café Korner Kebab
Ozolnieki, Meliorācijas iela 2-1,
+371 28122288

Pizzeria Vietējā picērija
Eleja, Lietuvas iela 25A,
+371 22310049, 28766673

Pizzeria Picburg pica
Ozolnieki, Stadiona iela 5b,
+371 22330030

Eco Shop Daba
Jelgava, Raiņa iela 17, +371 63084395,
www.dabadaba.lv

Eco Shop Zaļā zeme
Jelgava, Raiņa iela 35, +371 23771999,
www.zalazeme.eu

Festive Design Studio Sajūtu Studija – Aspazija, Jelgava, Raiņa iela 16,
+371 28310830

Shopping Center Kanclera nams Jelgava,
Katoļu iela 7 un Pasta iela 51/7,
+371 63011444, www.kanclers.lv

Salon Sanpo
Raiņa iela 14, +371 26525760, www.sanpo.lv

Jelgava Holy Trinity Church Tower
Jelgava, Akadēmijas iela 1, +371 63005445,
www.visit.jelgava.lv

Jelgava History and Art Museum of Ģederts Eliass
Jelgava, Akadēmijas iela 10,
+371 63023383, www.jvmm.lv

Ekskursija.lv
Travel, bus rental, booking of airline tickets, ferry tickets and hotels, visas, insurance. Jelgava, Svētes iela 18,
+371 63010455, 29490290,
www.ekskursija.lv

Noa Tour
Transport services, tours, travel, theatre tickets. Jelgava, Raiņa iela 20-200. kab., +371 63011077,
+371 22314063, www.noatour.lv

Star Tour
Travel, bus rental, booking of ferry, airline tickets, hotels, insurance, visas. Jelgava, Rīgas iela 11a, +371 63024240,
+371 27066830, www.startours.lv

N-Travel
Travel, tours, booking of hotels, cruises, bus travel, insurance, visas, charter flights. Jelgava, Raiņa iela 17,
+371 63021067, +371 26304115,
www.ntravel.lv



Jelgava Regional Tourism Centre, Jelgava, Akadēmijas iela 1,
+371 63005447, +371 25619266 tic@tornis.jelgava.lv, www.visit.jelgava.lv

Lielplatone Tourist Information Point, Lielplatone Manor, Lielplatone parish, Jelgava county, +371 26611468, lielplatones.muiza@jelgavasnovads.lv (GPS 56.4521918; 23.6594295)

Vilce Tourist Information Point, Vilce Manor, Vilce parish, Jelgava county, +371 26351169, +371 28346682, vilcesmuiza@jelgavasnovads.lv (GPS 56.4206676; 23.5423063)

Lielvircava Tourist Information Point, Lielvircavas iela 4a, Lielvircava, Platone parish, Jelgava county, +371 22024127, zanda.zarina@jelgavasnovads.lv (GPS 56.5214679; 23.7570932)

Eleja Tourist Information Point, Eleja Tea House, Eleja parish, Jelgava county, +371 26128853, kristina.jankovica@jelgavasnovads.lv (GPS 56.4253852; 23.6998833)

Zaļenieki Tourist Information Point, Zaļenieki Manor, Zaļenieki parish, Jelgava county, +371 22043531, barkovska.valija@gmail.com (GPS 56.5308990; 23.5082256)

Stalģene Tourist Information Point, Stalģene, Skolas iela 2, Jelgava county, +371 26383129, saiva.drupa@jelgavasnovads.lv (GPS 56.5718193; 23.9614250)

Vircava Tourist Information Point, Jelgavas iela 4, Vircava, Vircava parish, Jelgava county, +371 29916889, Ina.jurge@jelgavasnovads.lv (GPS 56.5591648; 23.7749299)

USEFUL INFORMATION

BY TRAIN

Trains Rīga-Jelgava depart from Rīga Railway Station once an hour, the duration of the journey is 50 minutes.
More information at www.pv.lv

BY BUS

Mini-buses Rīga-Jelgava depart from Rīga International Bus Station approximately every quarter hour, the duration of the journey is about 55 minutes.

Transport information: www.1188.lv
Public transport in Jelgava: the timetable and bus routes are available on Jelgavas autobusu parks (Jelgava Bus Fleet) *website* www.jap.lv

Transport information:
(+371) 1188

Emergency Medical Assistance:
113; +371 63022469

Jelgava City Municipal Police:
+371 63028550

State Police: 110 or 02

State Fire and Rescue Service:
112 or 01

**Jelgava City Municipality
Operational Information Centre in
Jelgava:** (+371) 8787

JELGAVA



JELGAVA



SIGHTSEEING

1. Jelgava Holy Trinity Church Tower
2. Jelgava History and Art Museum of Gederts Eliass
3. Wooden house at Vecpilsētas Street 14
4. Jelgava Palace
5. Vault of the Dukes of Courland
6. Memorial Museum of Ādolfs Alunāns
7. Jelgava Exhibition of Latvian Railway History Museum
8. Soviet Union Car Collection Anru motors *
9. Candy Workshop Karameļu darbnīca
10. Brewery Viedi
11. St. Anna's Lutheran Church
12. Catholic Cathedral of the Immaculate Virgin Mary in Jelgava
13. St. Simeon's and St. Anna's Orthodox Cathedral
14. Monument to Jānis Čakste, the First President of Latvia
15. Monument to the Liberators of Jelgava Lāčplēsis
16. Memorial Sign in Honour of the Singer Nora Bumbiere



NATURE AND ACTIVE RECREATION

17. Lielupe Floodland Meadows, Wild Horses and Observation Tower*
18. Wooden Boardwalks at the Floodland Meadows of the River Svēte
19. Langervalde Forest
20. Pasta (Post) Island and Mītava Bridge
21. Sculpture-fountain of Jelgava's Student
22. Jelgava Promenade
23. The Environmental Object Laika rats 100 (Time Wheel 100)
24. Uzvaras Park
25. Boat Tours on the Lielupe and Driksa Rivers
26. Paddle Boat rental Pelikāns
27. Pasta (Post) island SUP board rent
28. Stand up Paddle Board (SUP) Rental SUPX
29. Paddle Boat and Boat Rental on the Pasta Island
30. Jelgava Yacht Club
31. Boat rental Mučas
32. On the right bank of the Lielupe by the pedestrian promenade;
33. On the left bank of the Lielupe, on the Post Island.
34. Zemgale Olympic Centre
35. Recreation and Sports Centre Zemgale
36. Sports and Recreation Complex Rullītis
37. Lasertag park Laserdog
38. SIA Sāls istabiņa
39. Children and Youth Camp Lediņi
40. Bossiks
41. Bambino

42. Bumbu virpulis
43. Happy house
44. Ice Arena on the Pasta Island



ACCOMMODATION

103. Hotel Jelgava ****
104. Hotel Zemgale
105. LLU Youth Hostel No. 8
106. Guest House Kārdu muiža
107. Apartments Alauda
108. Central Hostel Jelgava



RESTAURANTS AND CAFÉS

139. Restaurant Panorāmas skati
140. Restaurant and Bistro Bar Park
141. Restaurant Chocolate & Pepper
142. Restaurant Pilsētas elpa
143. Bar-restaurant Putnu dārzs
144. Lunch Restaurant Otto
145. Tavern Istaba
146. Café Pie mednieka
147. Bar Melno cepurišu balerija
148. Tavern Kreklu krogs
149. Jelgava Palace Café Niko
150. Café Tavs mirklis
151. Picnic basket delivery PikniKarba
152. Café Central Cafe Jelgava
153. Café - pizzeria Comedor
154. Pizzeria Picu darbnīca
155. Pizzeria Čili Pica
156. Fast Food Restaurant McDonald's
157. Fast Food Restaurant Hesburger
158. Tea House Silva
159. Pastry Studio Tarte
160. Coffee and Breakfast Bar Academia
161. Bistro Silva
162. Pastry shop Putni
163. Pastry shop Mr.Zefirs
164. Bakery Prospekts Z9



SOUVENIRS

177. Eco Shop Daba
178. Eco Shop Zaļā zeme
179. Festive Design Studio Sajūtu Studija - Aspazija
180. Shopping Center Kanclera nams
181. Salon Sanpo



TOURISM AGENCIES

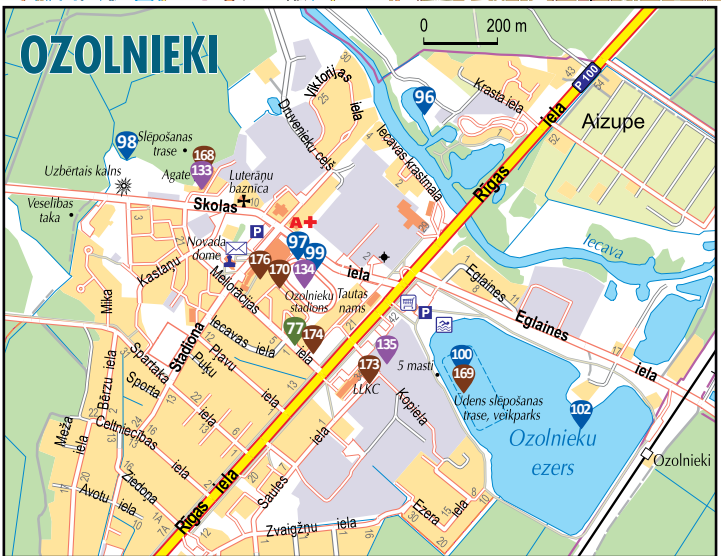
182. Ekskursija.lv
183. Noa Tour
184. Star Tour
185. N-Travel



0 250 m

JELGAVAS NOVADS

Lielais Kemeru Nacionālais parks



J33040, 2021

JELGAVA COUNTY



SIGHTSEEING

45. Christmas Battle Museum Mangaļi
46. Ložmetējkalns (Machine-Gun Hill) in Tīrelpurvs
47. The House of the First President of Latvia Jānis Čakste
48. The House of Literates Edvarts Virza and Elza Stērste Billites
49. Tetele (Tetelminde) Tower and Park
50. Vareļi Monument
51. Monument to the Fallen Soldiers of Riga 6th Infantry Regiment
52. Memorial Site Brīvības gaissma (The Light of Freedom)
53. Eleja Manor Park and Tea House
54. Zaļenieki (The Green) Manor and Park
55. Vilce Manor and Park
56. Lielplatone Manor and Park
57. Lielvircava Manor
58. Vircava Manor and Park
59. Staļģene Manor
60. Berķene Manor
61. Abgunste Manor
62. Blankenfelde Manor and Park
63. The Branch of the Riga Holy Trinity Sergiy Women's Monastery
64. Lielvircava Lutheran Church
65. Zaļenieki Lutheran Church
66. Livbērze Catholic Church
67. Staļģene St. Virgin Mary Church (the Amber Chapel)
68. Mālkalni Family Farm Blūdži
69. Peppermint Product Degustation Piparmētru namiņš
70. Beekeeping Farm Līgas medus
71. Shiitake Mushroom Farm Trubenieki
72. Sea buckthorn garden ZELT
73. Production of Roasted Beans Pupuchi
74. Distillery Tīreļu dzītuve
75. Ostrich farm Mazzariņi
76. Pine cone tasting Mītavas čiekurs
77. Confectionery Abra
78. Adventure and Relaxation Place Nākotnes parks
79. Natural cosmetics master classes Dārziņi-2
80. Garlic World
81. Amber production Livonijas dzintars
82. Woodworking Workshop Amatnieki
83. Arboretum Vilki
84. Frog figurine collection Varžu māja
85. Goat Farm Līčiši
86. Tree Nursery Bētras
87. Mini Zoo Lauku sēta



NATURE AND ACTIVE RECREATION

88. Nature Park Vilce
89. Recreation area Garie kalni - Būriņu mežs
90. Mītavas zirgi
91. Tīreļu stalli
92. Mazmušķu zirgi
93. Recreation Complex Grantiņi

94. Place for Active Leisure and Sports Līgotnes
95. Recreation and Entertainment Complex Viesu Līči
96. Boat Rental and Tours Ozolaivas.lv
97. Ozolnieki Sports School
98. Ozolnieki Forest Park
99. Ice Arena Ozo Halle
100. Wake Park 5 masti
101. Fishing Sudrablīcis
102. Ozolnieki Lake



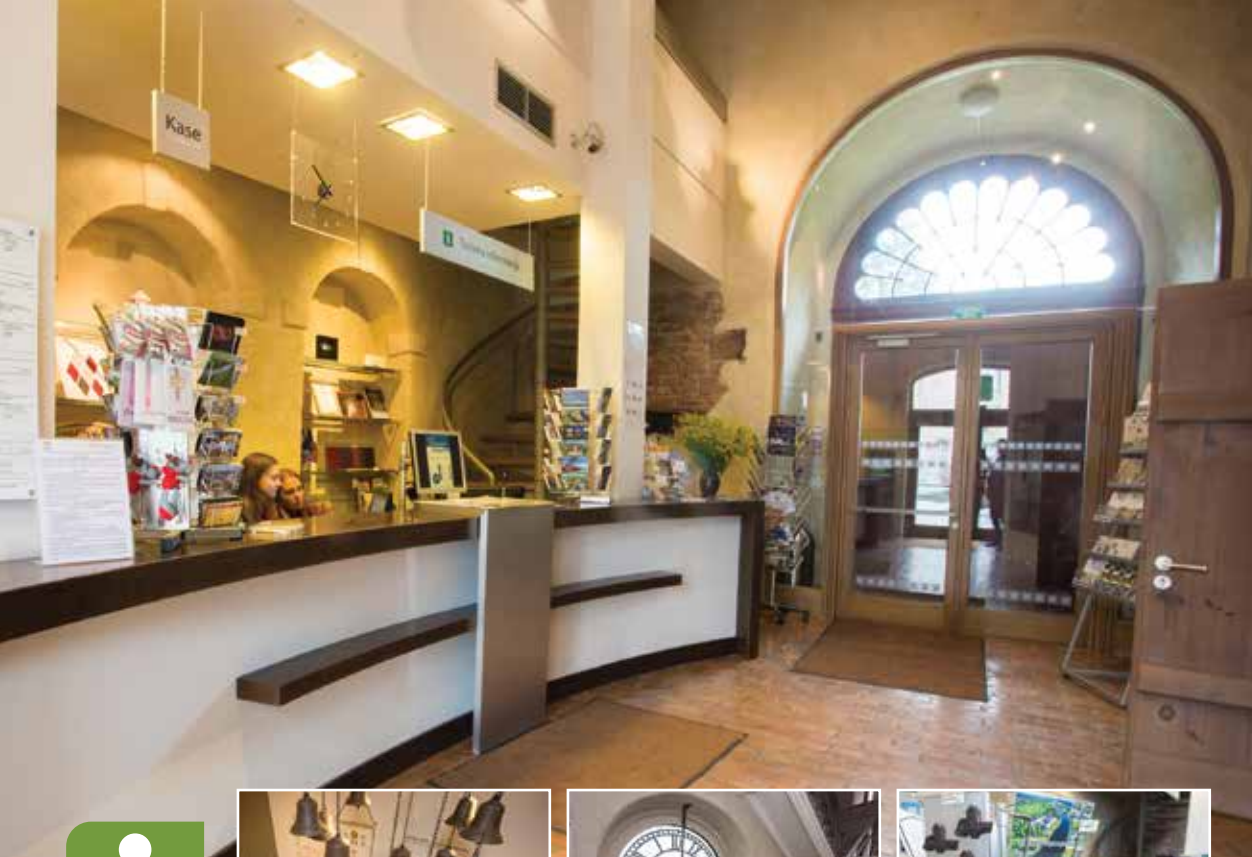
ACCOMMODATION

109. Hotel Senlīči
110. Recreation Complex Grantiņi
111. Berķene Manor
112. Abgunste Manor
113. Blankenfelde Manor
114. Guest House Pūteljkrogs
115. Guest House Aitiņlauvas
116. Guest House Guntmārītes
117. Guest House Upeslīči atpūtai
118. Guest House Zaļie atvari
119. Guest House Kaupēna dzirnavas
120. Guest House Brangūji
121. Guest House Naktsmājiņa
122. Guest House Upmaļi
123. Guest House Galzemji
124. Dormitory of Zaļenieki Commercial and Crafts School
125. Hostel Jaunlīdumi
126. Conference and recreation complex-hotel LIZARI
127. Guest House Albergē Livbērze
128. Holiday house Jasmīnu nams
129. Guest House Laukmaļi
130. Guest House Vijas
131. Adventure and Relaxation Place Nākotnes parks
132. Hostel Sili
133. Agate Hotel
134. Hotel of Ozolnieki Sports Centre
135. Dormitory of Latvijas Lauku konsultāciju un izglītības centrs
136. Holiday House Ānes muiža
137. Ānes Youth Initiative Centre Hostel
138. Camp Place Cīzeri (tent places)



RESTAURANTS AND CAFÉS

165. Restaurant Pūteljkrogs
166. Restaurant Grantiņi
167. Restaurant Aitiņlauvas
168. Restaurant Famille
169. Restaurant & Grill Bar Masti Grill&Chill
170. Bar Meka
171. Café Zemnieka cienasts
172. Café Piramīda
173. Lunch Restaurant Centrs
174. Kebab Café Korner Kebab
175. Pizzeria Vietējā picērija
176. Pizzeria Picburg pica



JELGAVA REGIONAL TOURISM CENTRE OFFERS:

- Tourism materials - brochures and maps about Jelgava, Zemgale, Latvia;
- Up-to-date information on significant sights, tourism services, events, opportunities for active recreation in Jelgava and the surrounding area;
- Guide services, excursions, tourist routes for different target groups;
- Souvenirs with the symbols of Jelgava and Latvia.

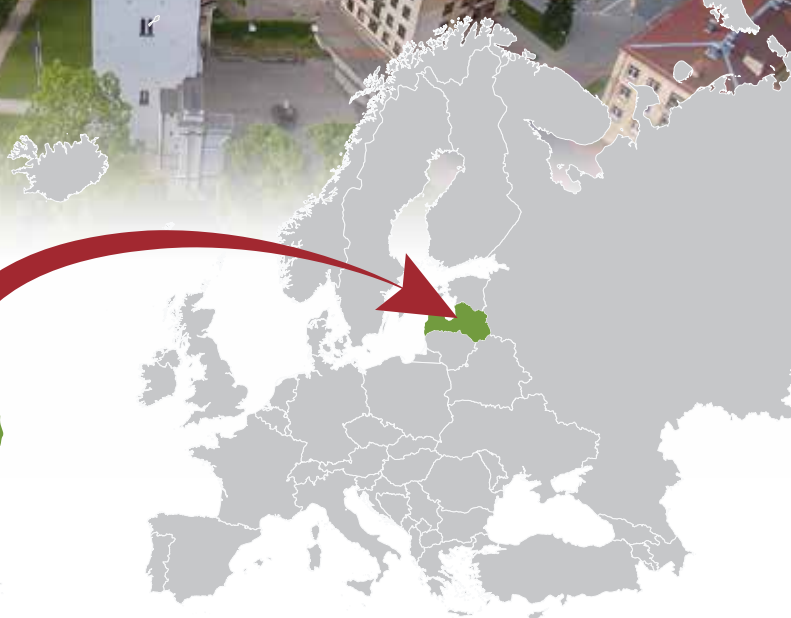


PHOTO:

From the archives of tourism objects of Jelgava Regional Tourism Centre, Jelgava City Municipality, Jelgava Local Municipality and Gvido Kanjons, Arta Joma, Ilze Strēle, Edgars Pogoželjskis, Ivars Veiliņš

PUBLISHER

Jelgava Regional Tourism Centre, 2022

PRINT

SIA IBC Print Baltic

CARTOGRAPHY

SIA Karšu izdevniecība Jāņa sēta

JELGAVA REGIONAL TOURISM CENTRE

Akadēmijas iela 1, Jelgava
+371 63005447, 25619266
tic@tornis.jelgava.lv
www.visit.jelgava.lv



Visit Jelgava
visit.jelgava



REĢIONĀLAIS
TŪRISMA CENTRS